

H2020-MSCA-ITN-2019

Innovative Training Networks



Emanuela Galeazzi – REA A.1
Brussels, 05/10/2018

This presentation shall neither be binding nor construed as constituting commitment by the REA

1. Generalities on ITN & Call modalities
2. Financing
3. Proposal template & Specific issues
4. Practical details



Generalities on ITN & Call Modalities

Excellent Science

European Research Council

€ 13.1 B

Marie Skłodowska-Curie Actions (MSCA)

€ 6.1 B

Future and Emerging Technologies

European research infrastructures
(including eInfrastructures)

Marie Skłodowska-Curie Actions



ITN
Innovative Training Networks

What does it offer?
High-quality research training delivered through international and interdisciplinary networks, industrial doctorates or joint doctorates

Who applies?
International networks of research organisations from the academic and non-academic sectors

Who is funded?
Researchers at doctoral level (less than four years of full-time research experience and no doctoral degree)

Call details:
Opened: 2 September 2014
Closes: 13 January 2015
at 17:00:00 Brussels time
Budget: € 370 million



IF
Individual Fellowships

What does it offer?
Opportunities to work on personal research projects by moving between countries and possibly sectors to acquire new skills

Who applies?
Individual researchers together with the host organisation

Who is funded?
Postdoctoral researchers

Call details:
Opens: 12 March 2015
Closes: 10 September 2015
at 17:00:00 Brussels time
Budget: € 215 million



RISE
Research and Innovation Staff Exchange

What does it offer?
The exchange of staff members involved in research and innovation to develop sustainable collaborative projects and the transfer of knowledge

Who applies?
International networks of research organisations from the academic and non-academic sectors

Who is funded?
Researchers, technical, administrative and managerial staff of any nationality and at all career levels

Call details:
Opens: 6 January 2015
Closes: 28 April 2015
at 17:00:00 Brussels time
Budget: € 80 million



COFUND
Co-Funding of Regional, National and International Programmes

What does it offer?
Regional, national or international programmes to foster excellence in researchers' training, mobility and career development

Who applies?
Organisations funding or managing doctoral programmes or fellowship programmes

Who is funded?
Researchers at doctoral and postdoctoral level

Call details:
Opens: 14 April 2015
Closes: 1 October 2015
at 17:00:00 Brussels time
Budget: € 80 million



ITN common features



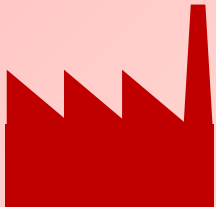
- ✓ Innovation, Training and Excellent Research
- ✓ International, multidisciplinary, inter-sectoral networks of organisations
- ✓ EU Principles for Innovative Doctoral Training
- ✓ Bottom-up approach: any scientific domain!
- ✓ Recruiting of only Early-Stage Researchers
- ✓ Mobility, also through secondments
- ✓ Project duration up to 48 months

Who applies ?



Academic sector

- ✓ public /private higher education establishments awarding academic degrees
- ✓ public /private non-profit research organisations whose primary mission is to pursue research
- ✓ international European interest organisations (e.g. CERN, EMBL)



Non-academic sector

- ✓ any entity not included in the academic sector:
- ✓ e.g. large companies, SMEs, NGOs, museums, hospitals
- ✓ international organisations (e.g. UN, WHO)

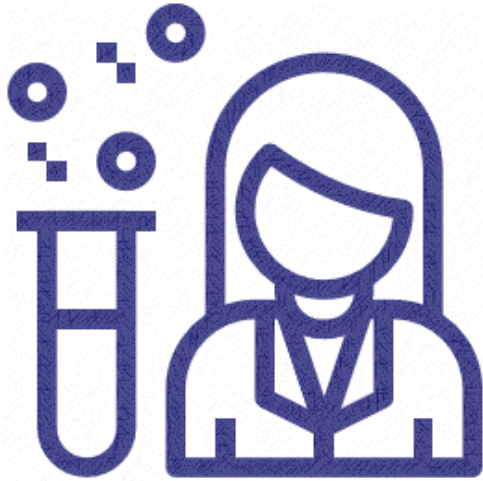
ITN – Participating organisations



Beneficiary vs. **Partner Organisation**

Signs grant agreement	✓	✗
Recruits and hosts researchers	✓	✗
Claims costs to the EU	✓	✗
Trains/hosts seconded researchers	✓	✓
Participates in supervisory board	✓	✓

ITN – Who

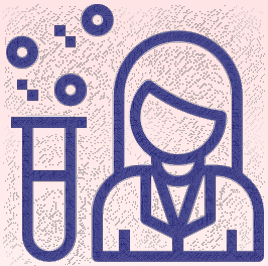


Researchers

- ✓ Only Early-Stage Researchers (**ESRs**):
 - ≤ 4 years of research experience
 - no PhD
- ✓ Mandatory **trans-national mobility*** at the time of recruitment
- ✓ Recruitment: **3 to 36** months after the project starts
- ✓ Researcher-months: requested in proposals

* **Mobility rule:** Researchers may have not resided or carried out their **main** activity (work, studies, ...) in the country of their host organisation for >12 months in the 3 years prior to the recruitment date.

ITN - Impact



✓ **Researcher level**

- Employability, successful career

✓ **Organisation level**

- Cooperation and ToK between sectors and disciplines
- Quality of training programmes

✓ **System level**

- Societal and economic relevance of European higher education
- Europe more attractive as a leading research destination
- Better quality research and innovation

ITN - How

Typical activities:

- ✓ Research
- ✓ Training
- ✓ Supervision

3 modes of implementation

ETN

European
Training
Networks

*Participants implement
a joint research programme
8 scientific panels*

EID

European
Industrial
Doctorates

*Doctoral training with the
non-academic sector
1 multidisciplinary panel*

EJD

European
Joint
Doctorates

*Doctoral programme to
deliver joint degrees
1 multidisciplinary panel*

ETN

Participants implement a joint research training programme

Mandatory

- ✓ Minimum 3 beneficiaries from 3 different MS/AC
- ✓ Each beneficiary recruits* and hosts at least 1 ESR
- ✓ Max 540 person-months (e.g. 15 ESRs x 36 months)
- ✓ Max 40% budget to one country

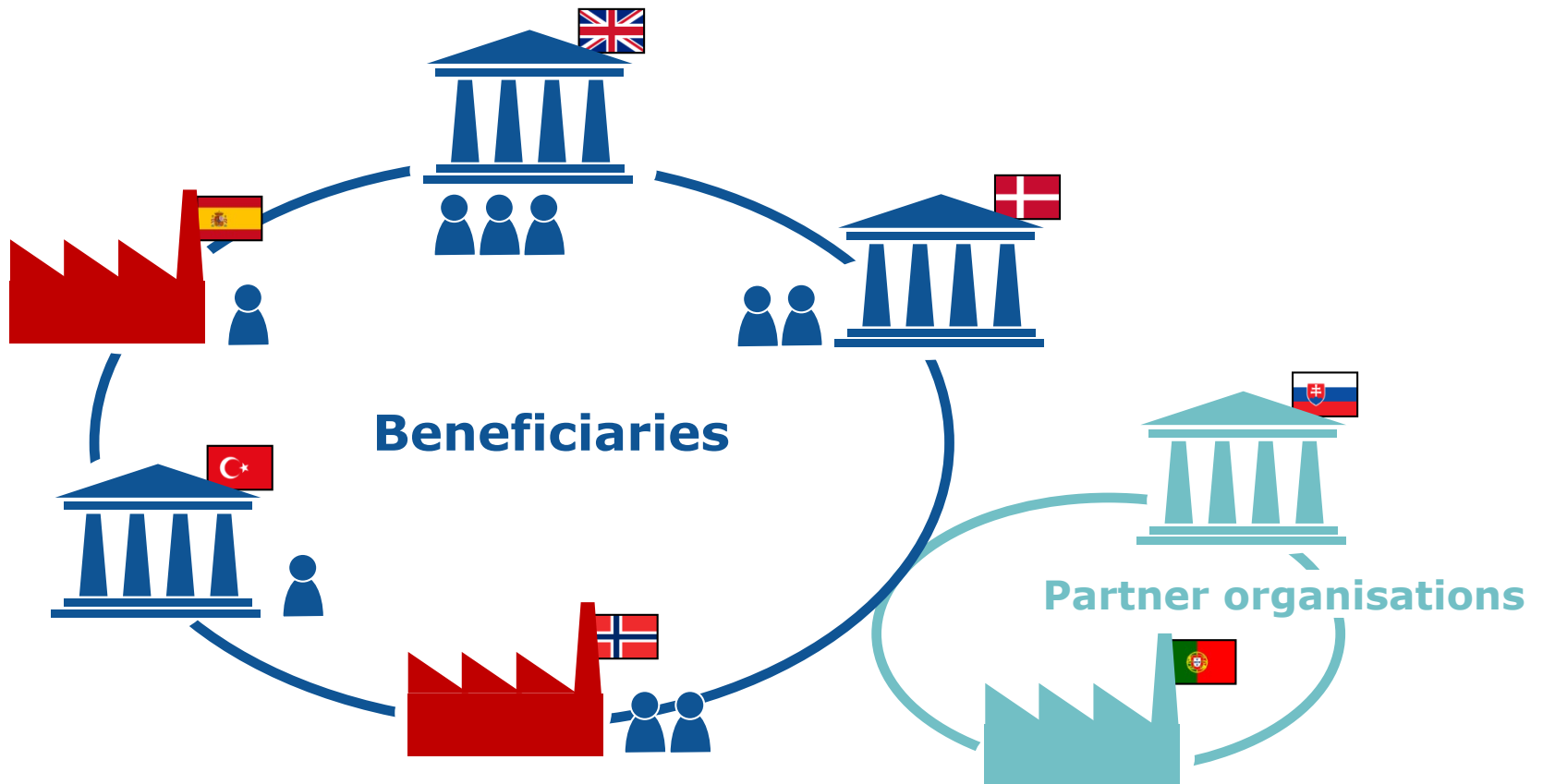
Other features

- ✓ Non-academic sector participation essential
- ✓ PhD enrolment typically expected (not mandatory)
- ✓ Secondments to other countries/sector/disciplines ($\leq 30\%$ time)
- ✓ Joint supervision recommended
- ✓ Partner organisations (any country/sector)
- ✓ Typically 6-10 beneficiaries

*Exception for entities with a capital or legal link

ETN

Participants implement a joint research training programme



EID

Doctoral training with the non-academic sector

Mandatory

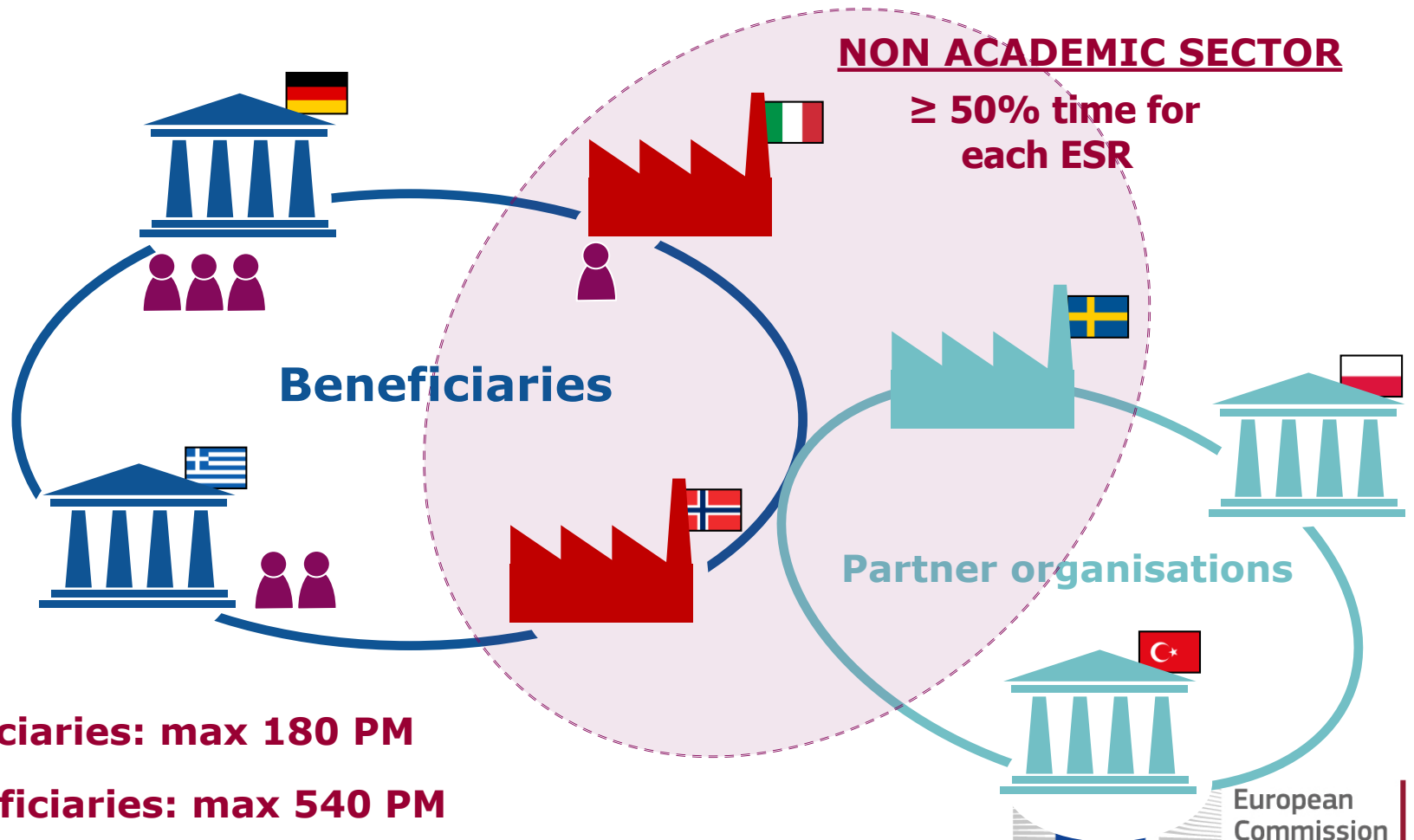
- ✓ Minimum 2 beneficiaries from 2 different MS/AC
1 academic + 1 non-academic
- ✓ **If:** 2 organisations = Max 180 person-months - e.g. 5 x 36 months
≥3 organisations=Max 540 person-months - e.g. 15 x 36 months
- ✓ Each ESR enrolled in a PhD (institution awarding doctoral degrees)
- ✓ Each ESR spends ≥ 50% time in non-academic sector
- ✓ Joint selection, training and supervision (1 supervisor/sector)
- ✓ Intersectoral secondments between beneficiaries are international

Other features

- ✓ Individual research projects under the topic of the doctoral programme
- ✓ Partner organisations (any country/sector)
- ✓ Flexible recruitment rule

EID

Doctoral training with the non-academic sector



EJD

Universities cooperating to deliver joint/multiple doctoral degrees

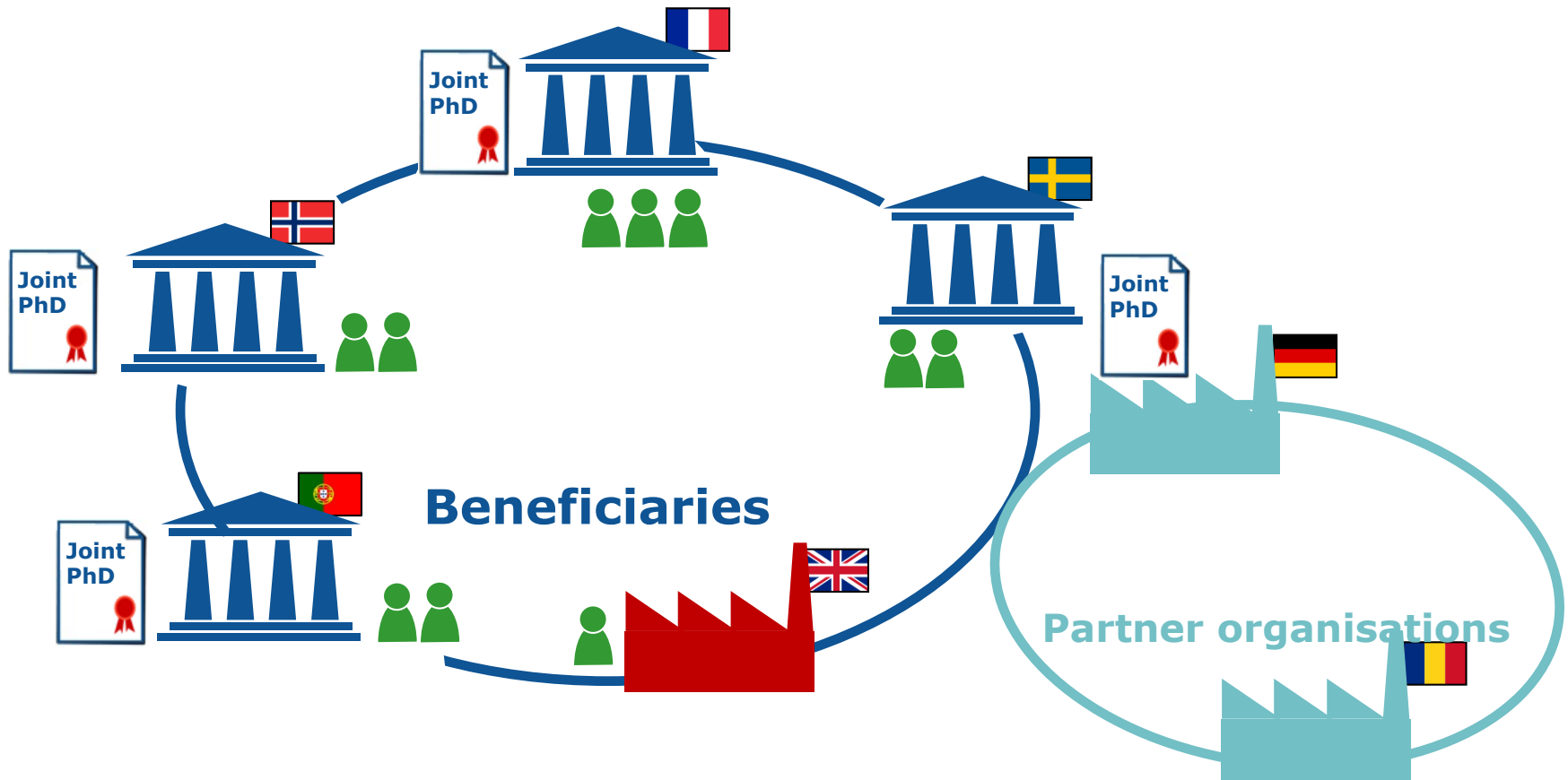
Mandatory

- ✓ Minimum 3 independent beneficiaries from three different Member States or Associated Countries (MS/AC)
- ✓ At least 3 beneficiaries entitled to award doctoral degrees, of which at least two institutions conferring a joint, double or multiple doctoral degree must be established in a MS/AC
- ✓ Each ESR enrolled in the joint (international) doctoral programme
- ✓ At least two-thirds of the supported ESRs enrolled in a joint/double/multiple doctoral degree awarded by two or more beneficiaries/partner organisations in an MS/AC
- ✓ The remaining supported researchers are enrolled in a joint/double/multiple degree awarded by at least one European participating organisation
- ✓ Joint admission, selection, supervision, monitoring, assessment, and governance
- ✓ Max 540 person-months and max 40% budget to one country
- ✓ Letters of institutional commitment from Organisations delivering joint/double/multiple doctoral degrees are required in the proposal (template in the *Guide for Applicants*)

Other features

- ✓ Flexible recruitment rule
- ✓ Please refer to the Guide for Applicants

EJD

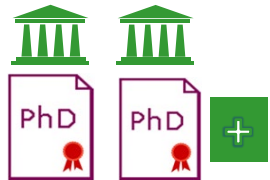


EJD

Universities cooperating to deliver joint/multiple doctoral degrees



Joint degree: single diploma issued by at least 2 academic institutions located in 2 different countries and recognised officially



Double/multiple degree: 2 or more separate national diplomas issued by two or more higher education institutions located in different countries and recognised officially

Consider **obligations** and **requirements** that researchers must fulfil to be entitled to be awarded with the PhD degree at each one of the degree-awarding institutions and the **administrative implications** to set up the joint/multiple agreement.

SUMMARY

	ETN	EID	EJD
Beneficiaries	≥3 from 3 diff. MS/AC	≥2 from 2 diff. MS/AC: (≥1 academic + ≥1 non-academic)	≥3 from 3 diff. MS/AC ≥3 awarding PhD, of which ≥2 in MS/AC
Person-months	Max. 540	Max. 180 / 540	Max. 540
Researchers	ESRs only (3-36 months)		
Partner Organ.	Unlimited (any country / sector / discipline)		
PhD enrolment	typically expected	mandatory	mandatory
Non-academic participation	essential	mandatory	essential
Inter-sectoral exposure	possible through secondments	≥50% in non-academic International (for beneficiaries)	possible through secondments
Panels and rank lists	8 panels: CHE, ECO, ENG, ENV, LIF, MAT, PHY, SOC (400 M€)	EID panel (35 M€)	EJD panel (35 M€)

Eligibility rules

EU 28 Member States (MS)
Associated Countries (AC)
Third Countries (TC)

ETN

**Min. 3 beneficiaries from any sector
from 3 different MS/AC**

EID

**Min. 2 beneficiaries from 2 different MS/AC:
min. 1 from academic
+ min. 1 from non-academic sector**

EJD

**Min. 3 beneficiaries from 3 different MS/AC
Min. 3 beneficiaries awarding PhD
Min. 2 conferring joint/double/multiple doctoral
degree in different MS/AC**

- **Above this minimum: participants from any sector / country**
- **All ITN: all beneficiaries are required to host at their premises and supervise recruited researchers.**
- **EID eligibility issue: 3 beneficiaries from 2 different MS/AC cannot respect the 40% rule**

Financing



Funding mechanism

Unit costs

Unit costs are a pre-estimated cost for the implementation of the action.

Advantage when applying

Automated calculation of budget when computing ESR months in your proposal

**1 unit
=
1 month of
eligible ESR**

ITN Costs categories

Unit costs/1 researcher month:

Researcher			Institution	
Living allowance	Mobility allowance	Family allowance	Research, training and networking costs	Management and indirect costs
3.270*	600	500**	1.800	1.200

- *** Country correction coefficient applies to the living allowance**
- Researcher allowances include employer contributions
- Researcher allowances are a minimum to be paid (top-up funds from other sources permitted)
- ** If applicable

Proposal template & Specific issues

Structure of proposals (electronic submission)

Part A - structured data -

European Commission - Research - Participants
Proposal Submission Forms
Research Executive Agency

Horizon 2020
Sub-programme
Call: H2020-MSCA-ITN
Topic: MSCA-ITN-2015
Action: MSCA-ITN-2015
Proposal Number: [redacted]
Proposer: [redacted]

new

Section	Title
1	General information
2	Participants & contacts
3	Budget
4	Ethics
5	Call-specific questions

How to fill in the forms?
The administrative forms must be filled in for each proposal using the template. The data fields in the administrative forms are pre-filled based on the previous steps.

H2020-ITN.pdf - Ver 1.54 20140318 Page 1 of 12 Last saved: 24/03/2014 at 16:08

Partner organisation in a separate table (manual entry, PIC encouraged but not mandatory)

Part B - Description of Action -

Annex 5

Annex 5 - Part B Template

START PAGE

MARIE SKŁODOWSKA-CURIE ACTIONS

Innovative Training Networks (ITN)
Call: H2020-MSCA-ITN-2015

PART B

"PROPOSAL ACRONYM"

This proposal is to be evaluated as:

[ETN] [EID] [EJD]
[delete as appropriate]

Part B - Page X of Y

Marie Skłodowska-Curie Actions, Guide for Applicants
Innovative Training Networks 2015

Page 32 of 46

Specific issue I

Page Limits

- ✓ Clearly indicated in Guide for Applicants
- ✓ Clearly indicated in the electronic system
- ✓ Exceeding pages disregarded during evaluation

DOCUMENT 1

START PAGE (1 page)

TABLE OF CONTENTS (1 page)

LIST OF PARTICIPATING ORGANISATIONS (max 2 pages)

START PAGE COUNT (MAX 30 PAGES SECTIONS 1-3)

1. EXCELLENCE (starting page 5)
2. IMPACT
3. QUALITY AND EFFICIENCY OF THE IMPLEMENTATION

STOP PAGE COUNT (MAX 30 PAGES SECTIONS 1-3)

DOCUMENT 2 (NO OVERALL PAGE LIMIT APPLIED)

4. EID specific requirements (for EID only)
5. CAPACITIES OF THE PARTICIPATING ORGANISATIONS
6. ETHICAL ISSUES
7. LETTERS OF COMMITMENT

Page limits:
Clearly set out in
electronic system:
excess page(s)
blanked out

30 pages max

Part B1: max 34 pages
(including **1 cover page, 1 page for Table of Contents**
and **2 pages for the List of participants**)

Specific issues II

- ✓ Partner organisations must include a letter of commitment in the proposal in Part B2 - Section B.7 (**no template**).
- ✓ No reference(s) to the outcome of previous evaluations in the proposal.

Final check

- ✓ Pay attention to differences between ETN/EID/EJD to meet the eligibility requirements for and objectives of the specific call/ITN implementation mode
- ✓ Follow the template guidance and format in the electronic submission system (access on the ITN 2019 call page)
- ✓ Address all evaluation criteria (some criteria are specific to EID and/or EJD)



Reminder: EID-specific

EID proposals must respect the following rules:

- ✓ All fellows must stay at the **non-academic** sector for **min. 50%** of their recruitment period. The inter-sectoral secondments must be **international** between **beneficiaries**.
- ✓ All fellows must be enrolled in a **doctoral programme** at an academic sector beneficiary/partner organisation.
- ✓ A mandatory **joint governance** structure with joint selection, supervision, monitoring and assessment procedures must be described in the proposal.
- ✓ Each ESR is **jointly supervised** by at least two supervisors, one from each sector.

Reminder: EJD-specific

EJD proposals must respect the following rules:

- ✓ **All fellows** enrolled in an **international** doctoral programme towards a joint/double/multiple degree
- ✓ At least 2/3 of the fellows enrolled in a joint/double/multiple degree within Europe. The others are enrolled in a joint/double/multiple degree from at least one MS/AC
- ✓ EJD participants awarding the joint/double/multiple doctoral degrees provide signed **letters of institutional commitment. Please USE the TEMPLATE!**
- ✓ **Mandatory joint governance structure** with joint admission, selection, supervision, monitoring and assessment procedures to be described in the proposal

Admissibility Criteria

To be considered **admissible**, a proposal/application must be:

- (a) submitted in the electronic submission system **before the deadline** given in the call conditions;
- (b) **readable, accessible and printable**.

Incomplete proposals/applications may be considered inadmissible. This includes the requested administrative data, the proposal description, and any supporting documents specified in the call.

Examples of Inadmissible proposals:

Part A/Part B1 missing or empty

Part B1 non readable or not following the template

NOT ADMISSIBLE

New in ITN 2019

- ✓ Separate table for "Partner Organisations" in the proposal template
- ✓ No Gantt chart
- ✓ Table "EID specific requirements" (only for EID)
- ✓ EJD and EID proposals will be evaluated by dedicated experts

Practical details



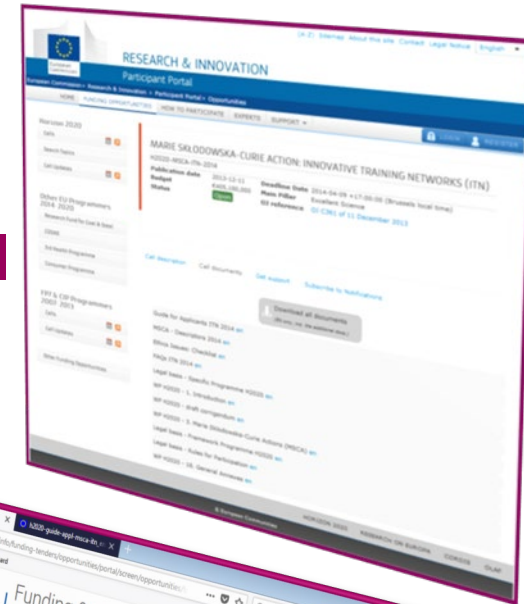
Action	Call opening	Call closure (at 17:00:00 Brussels time)	Budget*
ITN 2019	13/09/2018	15/01/2019	470.00 M€ (ETN 400 M€; EID 35 M€; EJD 35 M€)

Where to find information?

- Participant Portal
- Funding & Tender Opportunities Portal

ITN 2019 Call page

- ◆ Guide for Applicants **2019** (GfA)
- ◆ Work Programme (WP 2018-20)
- ◆ FAQs
- ◆ ...



Few links...

Marie Skłodowska-Curie Actions Website

<http://ec.europa.eu/research/mariecurieactions/>

Participant Portal (applications and reference documents)

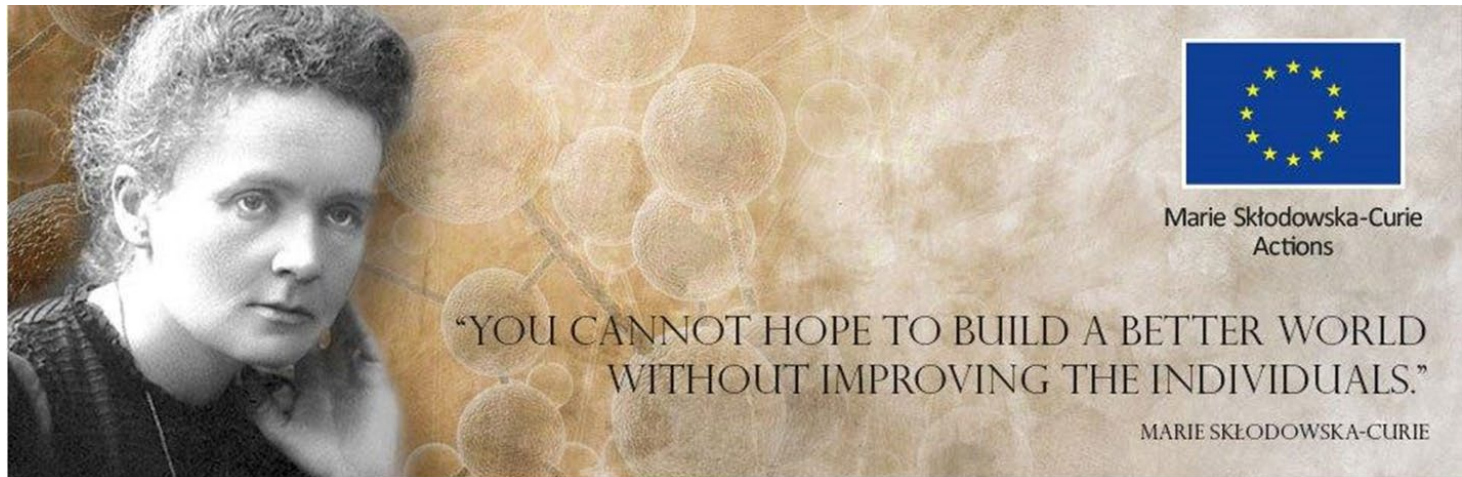
<http://ec.europa.eu/research/participants/portal/desktop/en/home.html>

Funding & Tender Opportunities Portal

<https://ec.europa.eu/info/funding-tenders/opportunities/portal/screen/home>

H2020 Grant Manual

http://ec.europa.eu/research/participants/docs/h2020-funding-guide/grants/applying-for-funding/find-a-call_en.htm



Thank you for your attention!

Emanuela.Galeazzi@ec.europa.eu

<http://ec.europa.eu/research/mariecurieactions/>

*Credits:
Icon made by Freepik from www.flaticon.com
Images from Getty Images or iStock*

